

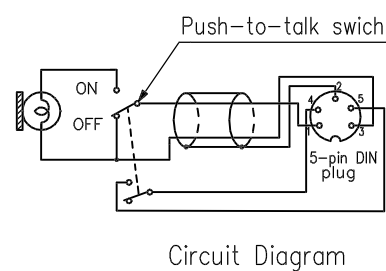
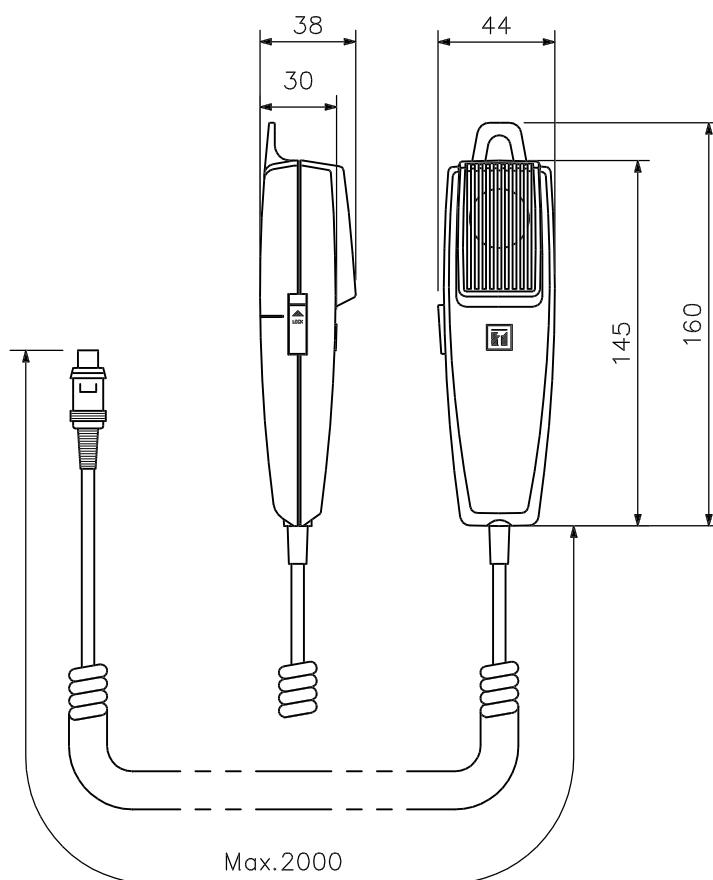
## DESCRIPTION

The PM-222D is a close-talking microphone for making general announcements. It comes with a talk switch that can be locked. It is provided with the function to remotely control both the amplifier power and chime operation.

## SPECIFICATIONS

Type	Moving coil microphone
Directivity	Unidirectional
Rated Impedance	600 $\Omega$ , balanced
Rated Sensitivity	-47 dB (1 kHz 0 dB=1 V/Pa)
Frequency Response	100 – 10,000 Hz
Cable	2-core shielded plus 2-core cable
Cable length	2 m (when extended)
Terminal	5-pin DIN plug
Remote switch	Make contact (linked with talk switch) 30 V DC less than 500mA
Talk switch	Short-off type with lock
Finish	ABS resin, gray
Dimensions	44 (W) $\times$ 160 (H) $\times$ 38 (D) mm
Weight	200 g
Accessories	Microphone holder.....1, Metal fitting.....1, Tapping screw4X16.....2

## APPEARANCE



UNIT:mm SCALE:1/3