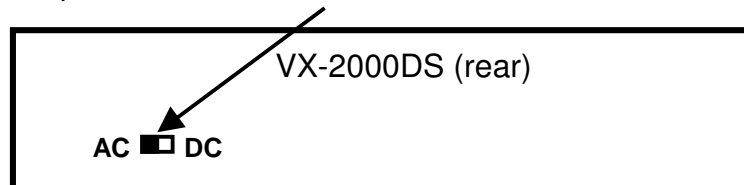


## VX-2000DS

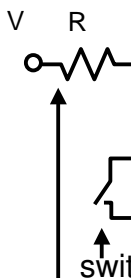
### Using The Emergency Power Supply VX-2000DS With VP-1000 Series Power Amplifiers And VM-2000

The VX-2000DS can not only be used for the VX-2000 system. When using with other power amplifiers, set the switch of the rear side to "AC":



#### Status Information Available On The RJ45 Connector

pin	colour	function	output when failure
1	org/wht	connection check between SF and DS	H
2	org	battery failure	L
3	grn/wht	charger failure	L
4	blu	DC failure (only for DC power input)	H
5	blu/wht	AC failure	H
6	grn	voltage input for opto-coupler	-
7	brn/wht	option	-
8	brn	activation of battery check	-
shield		ground	-



external voltage supply: V= 3.3VDC, R= 47 ohm, or V= 24VDC, R= 1.2 kohm

Status of open collector output transistor (max. current: 10 mA, max. voltage: 30V):

**H:** open (no connection to ground)      **L:** connection to ground

#### Example of Failure Information to VM-2000

