

## DESCRIPTION

The RS-160 can call and converse with the registered master stations.  
It utilizes a 2-core shielded cable.

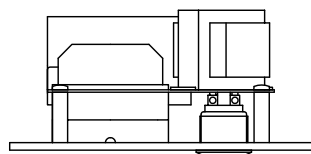
## SPECIFICATIONS

Rated Input	1 W
Rated Impedance	625 $\Omega$ (1 W/25 V)
Internal Speaker	4 cm cone-type
Operating Temperature	-10 °C to +50 °C (Temperature range not to freeze the speaker and switch)
Finish	Panel: Stainless steel, hairline Call button: Metal
Dimensions	120 (W) × 120 (H) × 57.5 (D) mm
Weight	540 g
Accessory	Box mounting screw (No.6-32UNC × 8) .....4, Box mounting screw (M4 × 25) .....4

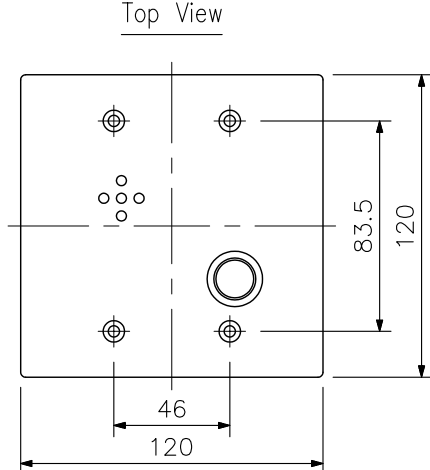
### Maximum cable distance

Cable Type	AWG24 ( $\phi$ 0.52 mm)	AWG22 ( $\phi$ 0.65 mm)	AWG20 ( $\phi$ 0.82 mm)
Distance	0.5 km	0.8 km	1.3 km

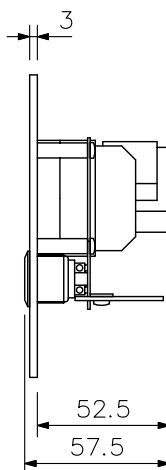
## APPEARANCE



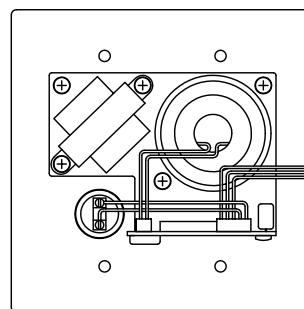
Top View



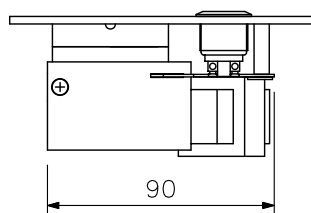
Front View



Side View



Rear View



Bottom View

UNIT:mm SCALE:1/3